

RESOLUTION
#87-49

A RESOLUTION SETTING THE TIME AND PLACE FOR PUBLIC HEARING ON THE VACATING AND ABANDONING OF THAT PORTION OF GOLFSIDE AT SUMMER BEACH UNIT 2 DESCRIBED HEREIN.

WHEREAS, Summer Beach Amenities Venture, Ltd., has petitioned the Board of County Commissioners of Nassau County, Florida, to vacate, abandon and to renounce and disclaim the right and interest of Nassau County, Florida, and the public in and to that portion of Golfside at Summer Beach Unit 2 described as follows:

Lots 85, 86, 87, 88 of Golfside at Summer Beach Unit 2 according to the plat thereof recorded at Plat Book 5, pages 119 through 123 of the public records of Nassau County, Florida.

WHEREAS, Section 177.101, Florida Statutes, authorizes this Board to vacate in whole or in part plats of subdivisions in this county and to return the property covered by such plats into acreage after given notice of and holding a public hearing to determine whether such action should be taken.

NOW, THEREFORE, BE IT RESOLVED by the Board of County Commissioners of Nassau County, Florida, in a meeting duly assembled that a public hearing will be held on said petition at the Nassau County Courthouse Annex Building in Fernandina Beach, Florida, on the 18th day of August, A.D. 1987, at 2:00 o'clock p.m.

BE IT FURTHER RESOLVED that notice of said meeting be published in the Fernandina Beach News-Leader, a newspaper of general circulation in Nassau County, Florida, at least two weeks prior to the date of said hearing, said notice to be in substantially the form as indicated on the attached.

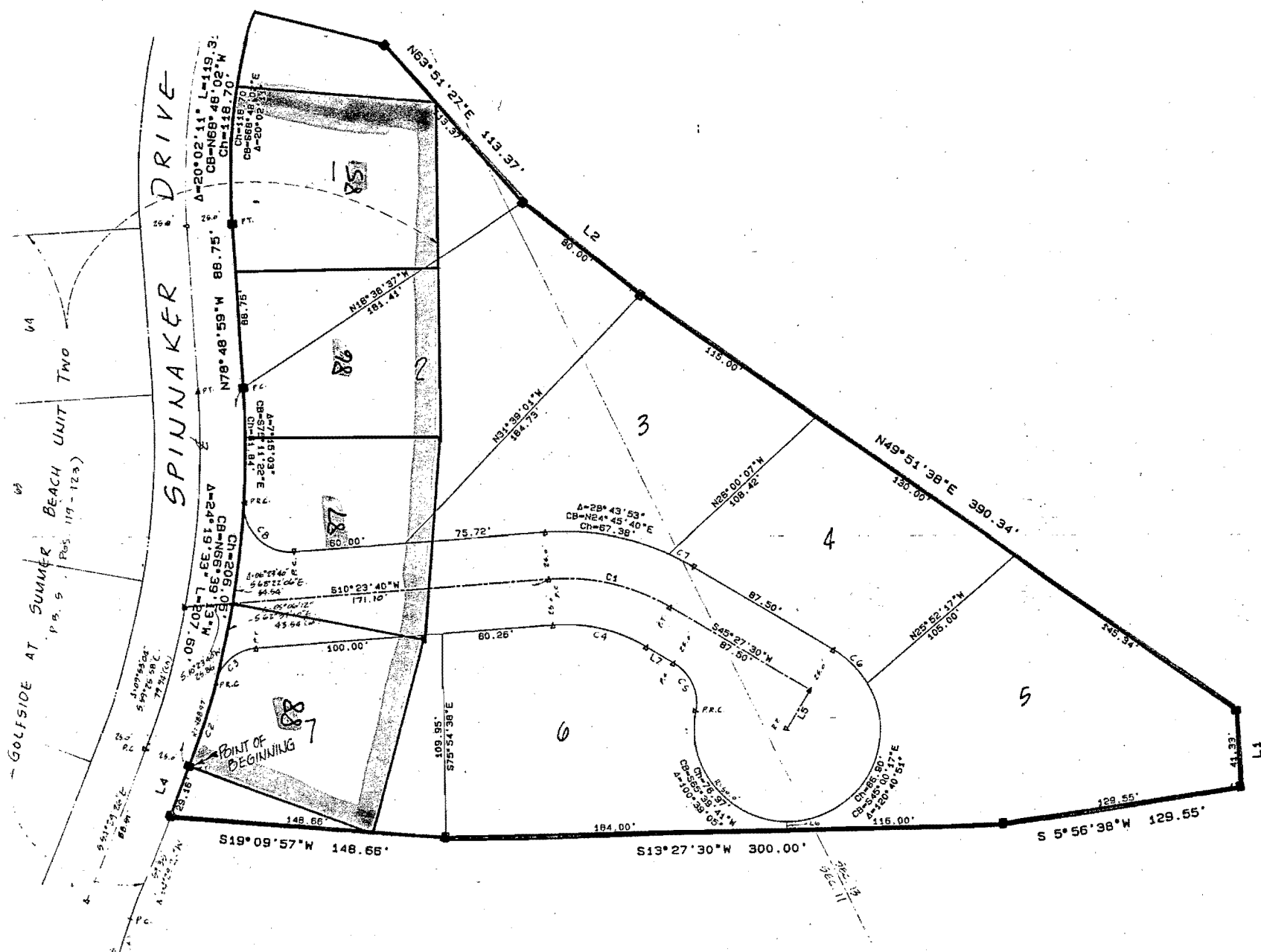
DATED this 21st day of July, 1987.

BOARD OF COUNTY COMMISSIONERS
OF NASSAU COUNTY

By: Gene Blackwelder
Gene Blackwelder
Its: Chairman

ATTEST:

By: T. J. Greeson
T. J. Greeson
Its: Ex-Officio Clerk



LINE TABLE

LINE	BEARING	DISTANCE
1	S77°37'30"E	41.33
2	N53°19'32"E	80.00
3	N31°34'07"E	72.53
4	N54°29'26"W	29.16
5	N44°32'30"W	25.00
6	S76°32'30"E	3.91
7	S45°27'30"W	16.79

CURVE TABLE

CURVE	DELTA	RADIUS	TANGENT	LENGTH	CHORD BEARING	CHORD
1	35°03'49"	110.79	35.00	67.80	S27°55'35"W	66.75
2	5°34'38"	488.97	23.82	47.60	S57°16'52"E	47.58
3	70°27'45"	25.00	17.66	30.75	S24°50'12"E	28.84
4	35°03'49"	85.79	27.10	52.50	S27°55'35"W	51.69
5	70°31'44"	25.00	17.68	30.77	S80°43'22"W	28.87
6	29°11'48"	50.00	13.02	25.48	N60°03'24"E	25.20
7	6°19'56"	135.79	7.51	15.01	N42°17'19"E	15.00
8	98°02'23"	25.00	28.78	42.78	N59°24'52"E	47.71

The lots outlined in blue are those we propose to vacate.

The perimeter outlined in red represents the proposed plat of Golfside 3.